



Ready to Engage

A guidebook for the safe return to full in-person learning for students in FSD 145
School Year 2021-2022





From the Board President

To our students, staff and community,

We welcome you back to school!. We are committed to in-person learning for all of our students each and every day. We believe in our mission, our core values and our beliefs as an organization. Covid will continue to test our resolve, but we have organized, consulted, set strategies and are adapting to continuous change. FSD145 has been recognized as a thought leader in developing strategies and actions through the pandemic and will continue to do so for our future.

We would like to thank you for your support and understanding as we navigate through these challenging times. We are truly focused on what's best for our children and staff. You have our assurances that we have and will continue to follow the latest guidelines, recommendations or mandates set by subject matter experts or officials.

We look forward to the safe return to full in-person learning for students and staff of Freeport School District 145. Please know that we will continue to be agile and adapt as conditions mandate.

Thank you and let's have a great and productive year!

Mr. Jack Sosnowski, President

Board Members:

Ms. Martha Furst, Vice-President

Mr. Pete Norman

Pastor Adron Simmons

Mr. Ryan Shirley

Mr. Alan Greene

Ms. Charlene Williams



From the Superintendent

Dear FSD Families and Staff,

Welcome to school year 2021-2022. In spite of the ongoing challenges that we are experiencing with the pandemic, we are looking forward as a district to welcome our students on day one: **Tuesday, August 24**. Our back to school plan: *Ready to Engage*, has been developed in accordance with Illinois State Superintendent of Education's declaration on mandated in-person learning for all on July 9, 2021 and the revised public health guidance provided by the Illinois Department of Public Health (IDPH) and the Centers for Disease Control (CDC) that was released on August 4, 2021. Our Ready to Engage back to school guidance document focuses on three important aspects of creating a safe environment for students as they return to school: Health and Wellness, Curriculum and Instructional Supports, and a Welcoming School District and Environment.

We are extremely grateful to our families for supporting us in our work. The kitchens, living rooms, and bedrooms in homes were transformed into classrooms for our remote learners this past school year. We are excited for the new possibilities that the 2021-2022 year will bring when we set forth great expectations for our students as they return to full in-person learning. The perseverance and willingness demonstrated by our staff brings us to new and more innovative ways of teaching, connecting, and supporting students. Our school leaders have been the pillars in their schools and will continue to ensure that the daily operations in schools will focus on not just the safety of students and staff, but also will create a welcoming environment for all.

Thank you for your cooperation and efforts toward providing a healthy and safe learning environment for our kids. Here's to our best school year ever yet!

Sincerely,

Dr. Anna Alvarado



Our Mission

In partnership with families, students, and the community, we commit to creating an innovative, inclusive, and student-centered learning environment so that all students are equipped and empowered to choose their college, workplace, and career path, and become engaged and productive members of their community.

Our partnership as we continue to engage students and staff

As we move forward together, regardless of your role as a parent, a student, a staff member, or a member of the community, we recognize these realities:

- We acknowledge that while we are eager to pivot to no masking and no social distancing, expectations can change anytime based on the regular updated health guidance that we receive.
- We shall exercise high levels of flexibility and adaptability to ensure all students, staff and parents are supported to achieve a smooth transition to in-person learning.
- We understand sometimes we must ignite innovation to solve problems and address challenges.
- We promise to take personal accountability for ourselves and others in order to maintain all safety protocols that still must be observed. We want to continue good health habits, such as hand washing, as part of our daily healthy living.
- We know we are navigating new opportunities, so we will share kindness, empathy and gratitude hoping to make a positive difference in the lives of others.





Table of Contents

Board of Education	2
Superintendent Letter	3
Our Mission	4
Health & Wellness	8
A Look Back on the Year of the Pandemic	8
COVID-19 Prevention Strategies	9
Bell Times for each school	9
FSD 145 Prevention Strategies to Reduce Transmission of COVID-19	10
Student Illness Protocols	13
Additional Considerations for School Reopening	14
School Supplies	14
Disabilities and Other Health Care Needs	15
Food Service and School Meals	15
Drinking Fountains/Bottle Refilling Stations	16
Signage	16
Visitors	16
Recess and Physical Education	17
Planned Attendance Procedures	17
Reporting Student Absences	18
Transportation	18
Curriculum and Instructional Supports	19
General Education Instructional Models for Fall 2021	19
Passing Times and Student Movement	20
Mental Health and Social-Emotional Learning	20
Special Education Programs	21
English Language Learners Programs	21
Preschool Programs	22
Plan for Instruction and Intervention	23
Grading	23
Specials Classes	23
Music	23
Art	23
Driver's Education	23



Virtual Registration	24
Technology	24
Field trips	25
A Welcoming School and District Environment	26
Parent Partnership	26
Community Partnership & Outreach	27
Childcare Facilities	27
Stephenson County Health Department	27
City Partnerships	27



As we work to find solutions to the challenges that our district and community face due to the COVID-19 pandemic, we are guided by three priorities: health and wellness, curriculum and instructional supports, and committing to a welcoming school and district environment.

Together, we pledge to live by our vision to be
All In for All Kids.

Health & Wellness

The health and wellness of our students, families, and staff is always the first priority for FSD145. We will continue to focus on maintaining healthy habits like hand washing, sanitizing and added protocols for health and safety will be essential to maintaining a healthy and safe environment. We also will focus on mental wellness for students and staff.

A Welcoming School & District Environment

We understand the importance of deepening our partnerships with families. We recognize that our students need a learning environment that is welcoming, joyful, and at the same time provides them with quality learning experiences that are developmentally appropriate and equitable.

Curriculum & Instructional Supports

FSD145 is committed to being All In for All Kids and strives to provide continuity to our students' learning during the 2021-2022 school year. The Ready to Engage plan is guided by our principles to be: Innovative, Inclusive, and Student-Centered.



Health & Wellness

The health and wellness of our students, families, and staff is always the first priority for FSD145. We will continue to focus on maintaining healthy habits like hand washing, sanitizing and added protocols for health and safety will be essential to maintaining a healthy and safe environment. We also will focus on mental wellness for students and staff.

A Look Back on the Year of the Pandemic

We are proud of the fact that we were able to keep the number of COVID-19 infections of both students and staff under 100 each since July 1, 2020. We attributed the low rate of infections in the school buildings due to the following reasons:

- The vigilance of our custodial staff in following cleaning and sanitizing guidelines.
- The building and transportation staff conducted symptom checks each morning.
- Our nurses were proactive in identifying students who showed COVID symptoms and needed to quarantine.
- Our teachers and staff ensured that social distancing rules were followed throughout the day.
- Our students and staff followed the mask guidelines throughout the day.
- Our families kept their child/children home when they exhibited COVID like symptoms.
- Our school leaders' consistently followed through with the daily safety operations of the building.
- Our nutrition and dining staff remained flexible in the location by which students were provided breakfast and lunch due to social distancing.
- Our ability to maintain flexible scheduling, including tiered busing, hybrid learning, and tiered dismissal that allowed for social distancing and managing the workload for students by adjusting their instructional minutes.
- Staff were offered to participate in Mindful Mondays to allow for mental health support and networking
- Accommodations for professional development, IEP meetings, and student performances were done virtually.
- An all hands on deck approach by staff ensured that we put the safety of students first, in spite of the challenges of teaching in an unfamiliar surrounding of a pandemic.
- Both classrooms and buses maintained seating charts throughout the school year that made it possible to contact trace and make a decision on whether staff and/or students were subject to quarantine.



As of August 4, 2021 the governor issued a mask mandate for all PreK-12 schools in Illinois for all students, staff and visitors regardless of vaccination status.

SECTION 1

COVID-19 Prevention Strategies Most Important for Safe In-Person Learning in FSD

On July 19, 2021, State Superintendent of Education, Dr. Carmen I. Ayala issued the following declaration mandating in-person learning with limited exceptions:

*Beginning with the 2021-22 school year, all schools must resume fully in-person learning for all student attendance days, provided that, pursuant to [105 ILCS 5/10-30](#) and [105 ILCS 5/34-18.66](#), remote instruction be made available for students who have not received a COVID-19 vaccine or who are not eligible for a COVID-19 vaccine, **only** while they are under quarantine consistent with guidance or requirements from a local public health department or the Illinois Department of Public Health.*

****In Freeport District, Remote Learning will not look the same as it did in the 2020-21 school year. Remote teaching will be provided only for students who fit the guidance for remote learning provided by ISBE. The majority of students who chose remote learning in the previous year will return to full in-person learning in the 2021-22 school year.***



Therefore, in accordance with the declaration made by the Illinois State Superintendent of Schools, FSD 145 schools will be fully open for in-person learning for the school year 2021-2022. The following are bell times for each school:

Blackhawk and Center Elementary Grades PreK-4	9:00 AM- 3:35 PM
AM Preschool	9:00 AM- 11:30 AM
PM Preschool	1:05 PM- 3:35 PM
Empire and Lincoln Douglas Elementary School	9:15 AM- 3:50 PM
AM Preschool	9:15 AM- 11:45 AM
PM Preschool	1:20 PM- 3:50 PM
Full Day Preschool	9:15 AM- 3:50 PM
Jones Farrar K-4	8:55 AM- 3:30 PM
5-6	7:45 AM- 2:35 PM
Carl Sandburg	7:45 AM- 2:35 PM
Freeport Middle School	7:30 AM- 2:30 PM
Freeport High School	7:30 AM- 2:30 PM
Banks-Bergagna Education Center	8:00 AM-2:00 PM



- FSD145 will continue to work with local public health officials from SCHED, consistent with applicable laws and regulations, including those related to privacy, to determine the prevention strategies needed in our community by monitoring levels of community transmission. (i.e., low, moderate, substantial, or high) and local vaccine coverage.

FSD 145 Prevention Strategies to Reduce Transmission of COVID-19 and Protect Students and Staff

1. Promoting Vaccination

FSD145 has partnered with SCHED to provide opportunities for both staff and students 12 years and older to receive the vaccine. We recognize that certain communities and groups have been disproportionately affected by the COVID-19 illness and severe outcomes, and some communities might have experiences that affected their trust and confidence in the healthcare system. Teachers, staff, students, and their families may differ in their level of vaccine confidence for personal reasons. We will continue to work to provide vaccination opportunities on campus for eligible students and staff. Students and staff may also utilize local options at Walgreens, CVS, Walmart and the Stephenson County Health Department.



The Illinois Department of Public Health is partnering with Freeport School District to sponsor a COVID-19 vaccination clinic for students 12 and older and staff. The clinic will be held at Freeport High School on the following dates:

- Round 1 - August 10 from 3 pm-7 pm
- Round 2 - Aug. 31 from 2 pm- 5 pm

2. Masking

Our goals:

- a. Keep all students and staff in a safe learning environment, especially for those who are unvaccinated through layered preventive strategies such as promoting masking particularly for unvaccinated individuals, social distancing, hand washing, sanitizing and self-certification prior to entering school buildings.
- b. Avoid as much as possible the disruption of instructional school days for both students and staff as a result of contact tracing and quarantine orders that could be minimized when unvaccinated individuals wear their mask indoors. Note: the mandate to fully open schools for in person instruction has diminished each school's ability to provide full time remote instruction.





- **Indoors:** Masks must be worn indoors at all times

Exceptions to universal consistent use of face masks include the following limited situations:

- A person who cannot wear a mask or cannot safely wear a mask because of a disability as defined by the Americans with Disabilities Act (ADA) (42 U.S.C. 12101 et seq.). Discuss the possibility of reasonable accommodation with workers who are not fully vaccinated, who are unable to wear a mask, or who have difficulty wearing certain types of masks because of a disability.
 - A person for whom wearing a mask would create a risk to workplace health, safety, or job duty as determined by the relevant workplace safety guidelines or federal regulations.
 - Individuals who have a condition or medical contraindication (e.g. difficulty breathing) that prevents them from wearing a face mask are required to provide documentation from the individual's health care provider. These individuals may wear a face shield in lieu of a face mask. However, physical distancing should be maintained.
 - When eating.
 - For children while they are napping with close monitoring to ensure no child leaves their designated napping area without putting their face mask back on.
- **Outdoors:** In general, people do not need to wear masks when outdoors. However, particularly in areas of [substantial to high transmission](#), CDC recommends that people who are not fully vaccinated wear a mask in crowded outdoor settings or during activities that involve sustained close contact with other people who are not fully vaccinated.
- Schools will continue to have masks available in the main office in the event that students, staff, or visitors need them.

3. Physical Distancing

Schools will Facilitate Physical Distancing to the Extent Possible.

- Physical distancing of 3 feet is recommended during eating and drinking and a 6 feet distance is recommended for unvaccinated individuals.





- Three feet distance is recommended (but not required) between unvaccinated students and a 6 feet distance is recommended (but not required) between unvaccinated adults or between unvaccinated adults and students.
- When unvaccinated persons cannot maintain recommended physical distancing, strict adherence to masking is critically important.
- Schools will work toward staggered schedules throughout the day and configure their spaces to provide space for physical distancing to the extent possible in their building.

Schools are Required to Continue Contact Tracing.

- Schools will coordinate with the local health department to monitor individuals excluded from school due to COVID-19 symptoms, a COVID-19 diagnosis or quarantine due to COVID-19 exposure.
- Schools will continue to keep seating charts for contact tracing purposes.
- Schools will keep lines of communication with parents/guardians on any quarantine orders as a result of contact tracing.

4. Handwashing and Sanitizing

- FSD 145 will continue to promote the practice of handwashing.
- We will continue to teach and reinforce handwashing with soap and water for at least 20 seconds.
- Avoid touching your eyes, nose, and mouth.
- Cover your mouth and nose with a tissue when you cough or sneeze or use the inside of your elbow.
- Hand sanitizer containing at least 60% alcohol (for teachers, staff, and older students who can safely use hand sanitizer) will continue to be made available in classrooms and hallways.
- Our custodial staff and school staff will continue the practice of sanitizing surfaces, work spaces, equipment, and frequently touched objects

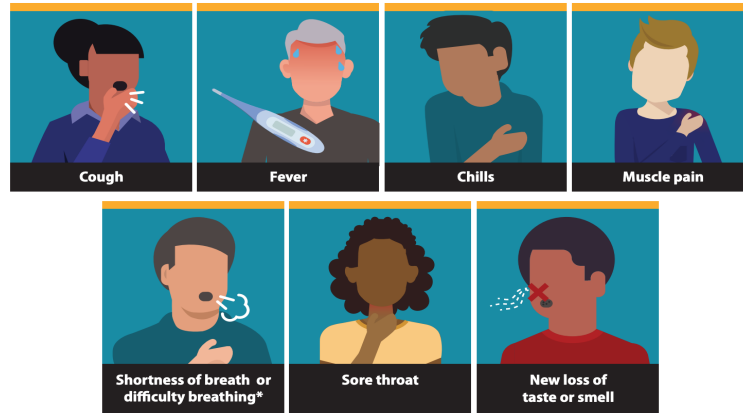


5. Staying Home When Sick and Self -Certifying

- Students, teachers, and staff who have symptoms of infectious illness such as [influenza](#) (flu) or [COVID-19](#), should stay home and be referred to their healthcare provider for testing and care. Staying home when sick with COVID-19 is essential to keep COVID-19 infections out of schools and prevent spread to others. It also is essential for people who are not fully vaccinated to quarantine after a recent exposure to someone with COVID-19.
- CDC guidance provides that people who are fully vaccinated and do not have COVID-19 symptoms do not need to quarantine or get tested after an exposure to someone with COVID-19.



- Staff and parents are asked to self-certify their child's health prior to entering any school building or district property. Symptoms of COVID-19 are as follows:



- Our nurses will continue to take a proactive approach to students who are not feeling well while in school.
- Parents will be notified to pick up their child immediately.
- Our nurses will continue to work with the SCHD for decisions on students who might have to quarantine.

6. Contact Tracing in Combination with Isolation and Quarantine



FSD will continue to collaborate with state and local health departments, to the extent allowable by privacy laws and other applicable laws, to confidentially provide information about people diagnosed with or exposed to COVID-19. This allows identifying which students, teachers, and staff with positive COVID-19 test results should isolate, and which close contacts should quarantine. Schools and school buses will continue to maintain seating charts for purposes of contact tracing.

7. Student Illness Protocols

Students should be checked at home each morning for [COVID-19 symptoms](#), particularly if they are unvaccinated.

- A loss of taste or smell
- Cough, chest congestion, body aches
- Or stomach issues, which might include diarrhea
- These are the most common symptoms noted by the Stephenson County Health Department.
- Checking for a fever of 100.4 degrees or higher is also an expectation for guardians prior to sending their student to school.

8. Cleaning and Disinfection

In general, cleaning once a day is usually enough to sufficiently remove potential viruses that may be on surfaces. Disinfecting (using disinfectants on the [U.S. Environmental Protection](#)



[Agency COVID-19 list](#)) removes any remaining germs on surfaces, which further reduces any risk of spreading infection.

SECTION 2

Additional Considerations for School Reopening

1. Most school supplies will be provided by the district. The following table includes specific supplies needed by grade level.

Preschool	<ul style="list-style-type: none"> ● Full size backpack (no wheels) ● Change of clothes (season appropriate) ● Pull Ups/Diapers/Wipes if your child is not potty trained ● Face Mask
Kindergarten-4th	<ul style="list-style-type: none"> ● Gym shoes ● Kleenex (1 box) ● Refillable water bottle ● Backpack ● Face Mask
5th-8th Grade	<ul style="list-style-type: none"> ● Backpack ● Face Mask
9th-12 Grade	<p>Basic school supplies. Teachers will advise students of specific supplies needed for their course during the first week of class. Basic school supplies include:</p> <ul style="list-style-type: none"> ● Earbuds with a microphone (Foreign Language courses only) ● Notebook paper ● Folders and/or binders ● Pens and/or pencils ● Face mask ● Backpack (FHS only, Students at FAHS will be provided backpacks)
PACC program	<ul style="list-style-type: none"> ● Washcloth ● Toothbrush ● Toothpaste ● Cup ● Hair brush and comb ● Gym shoes ● 1 change of clothes



	<ul style="list-style-type: none">• Face mask• 1 Backpack
--	--

2. Disabilities and Other Health Care Needs

FSD will continue to provide accommodations, modifications, and assistance for students, teachers, and staff with disabilities and other health care needs when implementing COVID-19 safety protocols:

- Work with families to better understand the individual needs of students with disabilities.
- Remain accessible for students with special needs:
 - Help provide access for [direct service providers](#) (DSP) (e.g., paraeducators, therapists, early intervention specialists, mental health and healthcare consultants, and others). If DSPs who are not fully vaccinated provide services at more than one location, care will be taken to investigate whether any of their other service locations have had COVID-19 cases.
 - Ensure access to services for students with special needs when developing cohorts.

3. Food Service and School Meals

The Nutrition and Dining Services Department has made a commitment to review and adjust our past School Breakfast and National School Lunch Programs. Our largest focus continues to be student and staff safety, and ensuring we are meeting Health Department procedures while we follow ISBE and IDPH guidelines. We will continue to work on a variety of service models to support safe nutrition and dining services.



- Physical distancing of 3 feet is recommended for students while eating or drinking. Given the risk of transmission among unvaccinated persons while unmasked, a distance of at least 6 feet is recommended for all unvaccinated individuals while eating.
- Maximize physical distance as much as possible when moving through the food service line and while eating (especially indoors). Using additional spaces outside of the cafeteria for mealtime seating such as the gymnasium or outdoor seating to help facilitate distancing.
- Given very low risk of transmission from surfaces and shared objects, there is no need to limit food service approaches to single use items and packaged meals.
- If there are students who meet the ISBE criteria for exemption to in-person instruction and have to learn remotely, Nutrition and Dining Services will work with families to make arrangements for meals.



Food Service Procedures and Supports

Nutrition and Dining Services will collaborate with each building administrator to coordinate the best service model that works for their specific building. This will be a fluid process to ensure we are accommodating the needs of students through efficient scheduling.

In the event that we are advised again to transition the District to full remote learning, we will return to the grab-n-go model that we used during the school year 2020-2021.

4. Drinking Fountains/Bottle Refilling Stations



Most of the old water fountains have been replaced with new water bottle coolers throughout the district.

Students can bring a personal reusable bottle to school full of water in the morning and refill during the day if needed. Most of our fountains are located near our restrooms and will be sanitized daily.

5. Signage

The school buildings will have plentiful social distancing reminders, as well as well posted signage to remind all staff and students about hand washing, proper mask wearing and COVID symptoms. In addition to signage, our messaging in announcements, in teaching and reteaching in classrooms helps to prepare our school family for continuous safety. Floor signage has been removed this summer and all signage will be posted on walls throughout the hallways.

6. Visitors

Schools will continue to review their rules for visitors and family engagement activities.

- We ask that all visitors self-certify prior to entering district buildings, and wear masks for the duration of their visit.
- Schools will not limit access for [direct service providers](#), but can ensure compliance with school visitor policies.





- Schools will continue to emphasize the importance of staying home when sick. Anyone, including visitors, who have symptoms of infectious illness, such as flu or [COVID-19](#), should stay home and seek testing and care.

7. Recess and Physical Education

In general, students do not need to wear masks when outdoors (e.g., participating in outdoor play, recess, and physical education activities). When physical education activities or recess are held indoors, it is particularly important for students to wear masks.



8. Planned Attendance Procedures

- Parents/Guardians are asked to communicate to the school any COVID-like symptoms.
- At the school level, the office assistants who will answer the phones will continue to ask parents/guardians questions regarding any COVID related symptoms in order to help the District partner with the Stephenson County Health Department to monitor any changes in reported symptoms within our community.
- Please provide the school with as much information as possible and understand that we are working together to keep us all in school, all year.
- Parents and students can login to Schoology for the day and continue to complete assignments if the student is feeling well enough. We appreciate the partnership between home and school with the shared goal of keeping students and teachers safe and connected.





9. Reporting Student Absences

- To report an absence of any student, please call the school your student attends.
- If you leave a message, please reference any COVID symptoms your student may have.
- It is likely that the school will check back in with home later if they have any follow up questions.
- If a student's symptoms become worse, or if a doctor provides a diagnosis, please share that with the school, so that we can work through the next steps together.

10. Transportation

Families are asked to complete their student's registration and elect school transportation by **Friday, August 6th**. Families who can transport their students are asked to do so. Transportation provided by the district will follow these guidelines:

- The CDC's order applies to all public transportation conveyances including school buses. Regardless of the mask policy at school, **passengers and drivers must wear a mask on school buses, including on buses operated by public and private school systems**, subject to the exclusions and exemptions in CDC's Order.
- Students will be assigned a seat and a seating chart will be kept on file.
- School buses will be disinfected between each tier of students and thoroughly disinfected at the end of each route.
- Transportation staff will wear masks and will be trained in disinfecting safety protocol
- All students will be issued a bus tag. Families may pick up bus tags on Saturday August 14 or students will receive them the first day of school.
- Bus information will be shared via SchoolMessenger on Thursday August 19th and Monday August 23.
- Schools will provide masks to those students who need them (including on buses), such as students who forgot to bring their mask or cannot afford them. No disciplinary action will be taken against a student who does not have a mask as described by the U.S. Department of Education guidance.



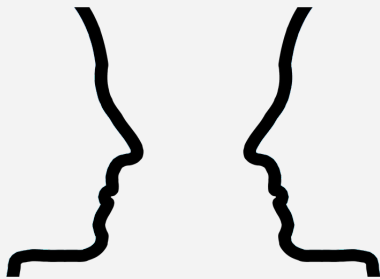


Curriculum and Instructional Supports

FSD145 is committed to being All In for All Kids and strives to provide continuity to our students' learning during the 2021-2022 school year. The Ready to Engage plan is guided by our principles to be: Innovative, Inclusive, and Student-Centered.

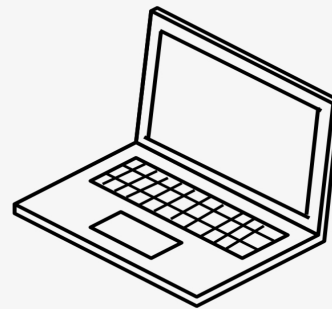
On May 20, 2021, ISBE passed the resolution requiring that all schools in Illinois must fully resume in-person learning for all student attendance days beginning in the school year 2021. Remote learning options will only be made available for students who are not eligible for a COVID-19 vaccine and are under a quarantine order by a local public health department or the IDPH.

General Education Instructional Models for Fall 2021



In-Person All Students PreK-12

Full time in-person instruction will be provided for our PK-12 per the ISBE guidelines. Students will attend school daily and operate under the recommended social distancing and healthy habit guidelines in order to provide full face-to-face instruction.



Remote Learning Preschool - 12

As per ISBE guidance, remote learning options will only be made available for students who are not eligible for a COVID-19 vaccine and are under a quarantine order by a local public health department or the IDPH.



1. Passing Times and Student Movement

There are busy moments in every building in the District, including the beginning and the end of the day and passing times. Revised CDC guidelines recommend schools maintain at least 3 feet of physical distance between students within classrooms. These revised guidelines will be followed and students will be taught and retaught social distancing. Some practices started during the 2020-2021 school year, such as mask breaks for elementary students, will continue as needed. At the elementary level, specials like art will be conducted in the classroom dedicated to that special, as long as 3 feet social distancing can be maintained.



2. Mental Health and Social-Emotional Learning

The Freeport School District is committed to the social and emotional health of our students and staff. We recognize the potential mental health impact that COVID 19 has had on our school community, and we are committed to prioritizing the social-emotional well-being of students and educators as a foundation for learning.

The district understands that the well-being of our staff has a direct impact on the instruction of our students and is committed to providing support to address their social and emotional health. Additionally, FSD145 is committed to advancing our students in the social and emotional learning standards through our curriculum and will

implement the following:



- Utilizing SEL standards to drive instruction;
- Implementing strategies to identify trauma that affects student learning;
- Focusing on adult SEL;
- Supporting the ongoing implementation of a Positive Behavior Intervention Support system;
- Collaborating with community resources to assist families with mental health concerns;
- Engaging parents in workshops and trainings to support their children's learning; and
- Partnering with outreach programs to provide additional counselors with supporting students and staff with mental health concerns.



3. Special Education Programs

Students with Individualized Education Plans (IEPs) and 504s will be provided instruction and related services based on the ISBE guidelines.

If a student qualifies for special transportation through their IEPs, the transportation department will transport students to and from school, including preschool.



Currently, schools outside of the district working with the FSD 145 will provide in-person instruction and related services. Special transportation arrangements will be provided by the district. Instruction and related services for students who are placed in these alternative special education programs will be agreed upon by the attending schools and FSD 145.

4. English Language Learners Programs

Grades PK- 4 Students in self-contained Spanish bilingual classrooms will be provided language and content area instruction in their native language along with specific English language development instruction. Instructional services will be determined by each student's language proficiency & performance level.



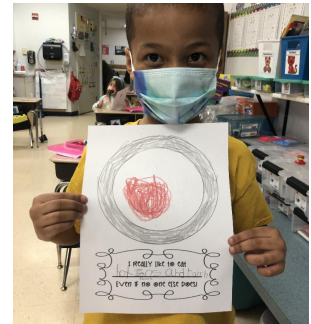
Grade K-6 English learners in non-bilingual classrooms will be provided supplemental ESL instruction while also using the Essential Skills program to support their learning remotely.

Grades 7-8 English Learners who are at levels 1 (entering) and 2 (beginning) of English language proficiency, will attend in-person learning. All English learners will continue to receive native and English content-specific instructional support while also receiving supplemental language development opportunities. English development instruction will be determined by program year and language proficiency level.

Grades 9-12 English Learners who are at levels 1 (entering) and 2 (beginning) of English language proficiency, will attend in-person learning four days a week. English Learners will receive native and ESL support as determined by their English language proficiency.

5. Preschool Programs

Preschool students will be provided in-person instruction in either an a.m., p.m. or full day session. Social distancing of 3 feet will be encouraged and reinforced by staff. Per CDC guidelines, cleaning once a day is usually enough to sufficiently remove potential viruses. Cleaning and disinfection of the classroom and high touch areas will take place daily by staff.



- In-person instruction will be delivered in a two hour and 30 minute half-day session and a six hour and 35 minute full-day session. Students will be assigned to a specific classroom, based upon students' needs but typically in their home school.
- Whole group, small group and differentiated instruction (Intentional play-based) will take place each day using Creative Curriculum. Students will be assessed observationally using the Teaching Strategies Gold (TS Gold).
- Gross motor time will take place outside or in the gym/cafeteria.
- Social Emotional Learning (SEL) will also be in place (Second Step and Zones of Regulation).

6. Plan for Instruction and Intervention

Multi-Tiered Systems of Support (MTSS) is a research-proven, instructional framework for providing effective instruction and intervention to maximize academic achievement and positive behavior. During the 2021-2022 school year, the District will be implementing a robust and equitable Multi-tiered System of Support (MTSS). This system will identify grade level and





subject area critical learning benchmarks needed to provide learning that was unfinished during the pandemic.

7. Grading

Skyward Family Access will still be used to report attendance and discipline to families and the instructional information (assignments and grades) will be housed in Schoology.



8. Specials Classes



Music

Our music teachers have made plans to modify the class processes for their performance based classes to maximize safety and they have developed creative ways for the students to perform and share their performances.

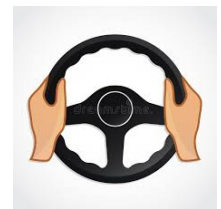
Art

Students in art classes will also benefit from creative instruction to maximize safety and still allow students to fully participate in artistic pursuits.



Driver's Education

Driver's Education is a very sought after class. Typically, students entering 10th grade are enrolled in the class, provided they are in good academic standing. Students are enrolled by birthdate, so sophomores with earlier birthdates are enrolled in the first semester and students with later birthdates are enrolled in the second semester. If there is room in the second semester classes, then freshmen may be allowed to enroll in the class. Students must be 15 years of age by the first day of the class. Two sections of summer drivers ed are also offered. The registration date for these classes will be announced in the spring, and registration is on a first-come, first-serve basis.



Students must successfully complete 30 hours of classroom instruction and six hours of driving instruction. Permits are issued after students have passed the Rules of the Road test, which is taken at the beginning of the course. A driver's license will not be issued by the DMV until a student has had a permit for nine months.



9. Virtual Registration

In order to promote and encourage the ability to pay school fees online, provide physicals to the school and update paperwork, a team of office staff have transitioned many of our paper processes into electronic processes. Parents can expect to receive more emails from the office staff or mailings with instructions with new electronic procedures to allow for “contactless” registration options.

10. Technology

Internet

- All families will need reliable high speed Internet access in their home.
- Freeport School District has partnered with Comcast to assist qualifying families with getting connected to the Internet. In order to take advantage of the Sponsored Internet Agreement with Comcast, you will need a Promo Code from the school district. You may receive your code by contacting the Freeport School District Technology Department at (815) 232-0569.

Hardware and Devices

- **All K-12 students** in Freeport School District 145 will have a Chromebook assigned for their use during the 2021-2022 school year.
- **Preschool** students who, for medical reasons, are participating in remote learning will be given a device to use during remote learning.
- **Elementary** students will keep their Chromebook at school unless directed by a staff member to take them home. Students will need a backpack for the 2021-2022 school year. The District will provide a Chromebook sleeve for the safe transportation of devices. A backpack can be provided by the District, if needed.
- **Grades 5 - 12** Students will take their Chromebook home daily. Students will need a backpack with a laptop/Chromebook compartment for safely transporting their device. A backpack can be provided by the District, if needed.



If you are in need of assistance with regards to technology, please contact the FSD 145 Technology Department at 815-232-0569 for further information.



11. Field trips

Field trips will need to be approved by the principal and central office.

Consideration will be given to the rate of COVID infection of the community or county where the students are going to. We want to ensure that we are cautious about keeping infection rates to a minimum in our schools in order to avoid disruptions to learning.

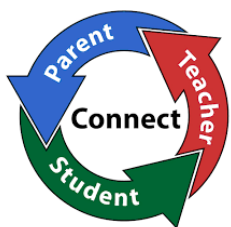




A Welcoming School and District Environment

We understand the importance of deepening our partnerships with families. We recognize that our students need a learning environment that is welcoming, joyful, and at the same time provides them with quality learning experiences that are developmentally appropriate and equitable.

As a District we acknowledge that in order for families and community to feel welcome in our District they must feel connected. FSD recognizes and values the importance of partnership and outreach with our families and community stakeholders. These key components are vital in meeting the needs of our students and families.



Parent Partnership

The strength of our partnership with our families lies heavily in our ability to effectively communicate with them.

The last school year has certainly proven that an effective communication system and the opportunity for stakeholder feedback is more important than ever before. Communication is vitally important to achieve our shared purpose of education for all. We thank all of our stakeholders for their ongoing support and patience as we continue to navigate our new normal together.

As we move from "Surviving to Thriving" to "Ready to Engage," we are committed to honest and consistent communication with our FSD Community, both internal and external. Methods of communication include:

- Superintendent's Weekly Communication - *Weekly communication is designed to provide updates, announcements and other District news. This communication is sent to District families and can be viewed by the public on our website*
- Virtual Q&A - *These virtual Q&A sessions may occur quarterly or as needed and provide parents and community members an opportunity to ask questions of the District leadership team and express their concerns.*
- Email - *Parents and community may email questions and concerns to the District Office at COVID-19@fsd145.org*



- Website - *The FSD website has dedicated a section for information regarding our return to full in-person learning for the 2021-22 school year. There is also a "Frequently Asked Questions" section and a link to the COVID-19 mailbox for submitting other questions/concerns.*

Community Partnership & Outreach

When schools and community organizations work together to support learning, everyone benefits. Community partnerships with key educational partners like the YMCA (SACC) and the Boys and Girls Club serve to strengthen, and support the educational process students and families.



for

Childcare Facilities

The District has partnered with local daycare providers to share openings and hours of operations. More information regarding specific daycare options for families can be found on the Enrollment and Transportation website. The district has reached out to both private and public daycare providers and a listing of available locations and contact information is on our website. We have been in communication with Amity, YMCA Children's Center and the YMCA SACC program, Open Bible, Immanuel Lutheran as well as multiple in-home licenced daycare providers to ensure a seamless transition to their after school care and programming for our students.

Stephenson County Health Department

The District appreciates the leadership and guidance that the Health Department has provided the School District since the beginning of the pandemic. Our school nurses are depending upon the assistance of the Health Department to manage contact tracing and to provide ongoing guidance throughout the coming school year. The Health Department's conservative approach to risk is a valuable asset to our community.



City Partnerships

Leaders from the Greater Freeport Partnership, the City of Freeport, the Stephenson County Health Department, and the Freeport Public Library are partners with FSD145 leadership. As governmental agencies, we all share the commitment for a safe reopening of school this fall with safety protocols and educational choice in place. FSD145 recognizes the impact education has on parents' ability to work and continues to make safety decisions, knowing that every decision will have a ripple effect on District families.